

Measurements shooting jacket and trousers ECONOMY

Dealer

.....

.....

Name and first name

Address

Phone/mobil/e-mail

Customer's signature

Date

Place

Order number

Man Woman

Left handed Right handed

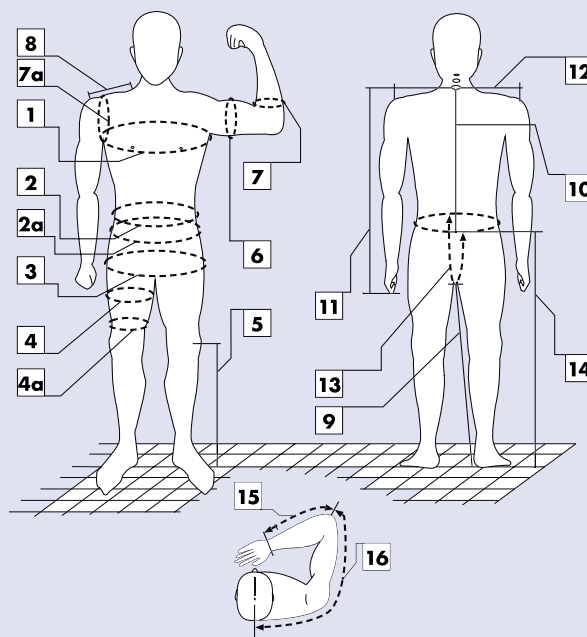
Length

Confection size

Weight

Jacket ECONOMY

- 1 Chestline / Cricle
- 2 Waistline / Circle
- 2a Hipline / Circle
- 3 Bottomline
- 6 Overarm / Circle
- 7 Underarm / Cricle
- 7a Shoulder / Circle
- 8 From neck to shoulder angle
- 10 From neck to waistline
- 11 From neck to finger angle
- 12 Backline
- 15 From elbow to hand angle
- 16 Length of arms

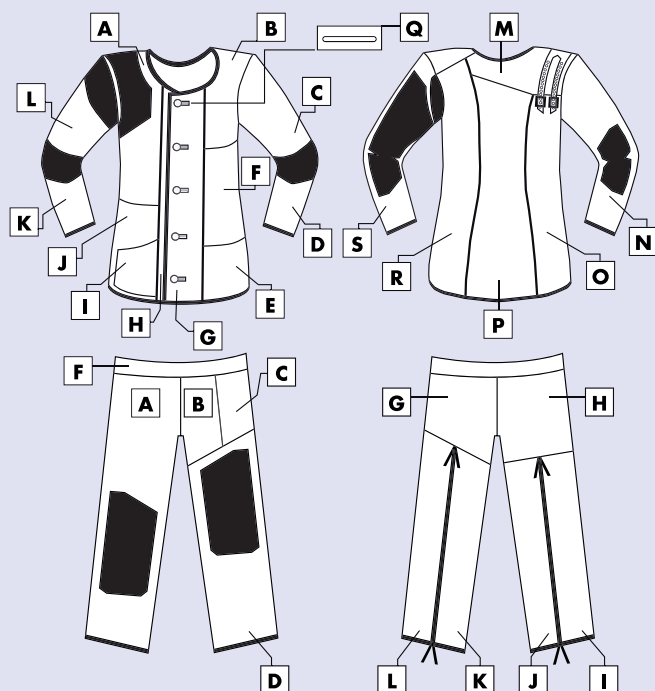


Trousers ECONOMY

- 2 Waistline
- 3 Bottomline
- 4 Thigh size/ Circle
- 4a Owerknee / Circle
- 5 From middle of knee to floor*
- 9 Inside leg length to floor*
- 13 From waistline to waistline
- 14 From side-waistline to floor*

* ... Please measure without shoes!

Notes



Leatherette	
41	
42	
43	
44	
45	
46	
47	
48	
49	
50	

Canvas	
19	
20	
21	
22	
23	
24	
25	
26	
27	
28	
29	

Button	
Red	
Blue	
Black	
Yellow	
Orange	
Green	

Color combination			
A	C		
B	C		
C	K		
D	C		
E	C		
F	L		
G	C		
H	C		
I	K		
J	C		
K	C		
L	K		
M	K		
N	C		
O	C		
P	C		
R	C		
S	C		
Q	K		

K = Leatherette
C = Canvas